

G40HDSDI Series

Full-HD SDI PTZ Speed Dome Megapixel Camera



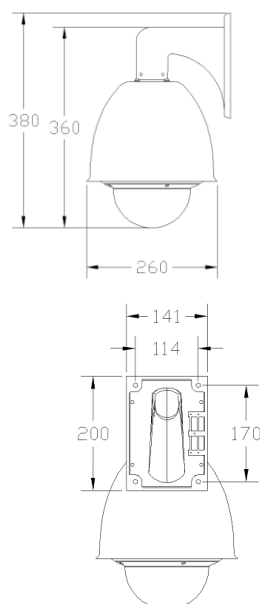
Features

- High Precision PTZ device
- Low power consumption
- Temperature control and display on OSD
- Aluminium Alloy construction and inner cover (G70) ne power-up action
- IP66 Weather proof / TVS1500W Lightning proof for outdoor.
- Easy-Plug® Connector for simple installation. Automatic Wide Dynamic Range Function

Technical Specifications

MODEL	G40HDSDI
CAMERA CHARACTERISTICS	
Optics	G40HDSDI820: 20x Opt 1080p
Resolution	1080p; 1920 x 1080, 1280 x 720, 720 x 480, 720 x 576
Features	Autp/Manual Focus, Auto/Manual WDR, Auto/Manual White Balance (ATW, Indoor, Outdoor, Auto Sodium Vapour Lamp (fix/auto), One Push, Manual), Video Enhancements (AGC, BLC, AE/ALC, WB, Eletr.-Flip, Mirror, DNR, Slow-Shutter, Colour Enhancement)
Privacy Masking	Max. upto 24 masks
Gain control	Auto/Manual (-3 dB to +28 dB, 16 steps), Max. Gain Limit (6 dB to 28 dB, 12 steps)
Others	S/N Ratio: >50dB, Shutter speed: 1/1 to 1/10000 sec
PTZ CHARACTERISTICS	
PTZ Range	Pan: 360°, 0.4° to 320° per sec / Tilt: 90°, 0.4° to 150° per sec
Preset position	128 positions
Sequence Tour	4 Preset tours
Scan Track	4 Scan tour
Pattern Track	4 Pattern Tour, 100 sec each
PTZ Protocol	Multi-Protocol over RS485
PROPERTIES	
Alarm I/O	4x Input and 1x Output
Video Output	HD-SDI, BNC 1Vp-p 75W
Operating Temperature range	-20°C to 50°C, 95% Humidity
Weather Protection	IP66 Weather and Lightning- proof with built-in Heater & Fan
Power Consumption	24V AC, max. 60W with heater & blower ON

Dimensions (mm)



Accessories

WP20 – Power



BW1 – Ceiling mount



BW2 – Wall mount



BW7 – Pole mount



BW9 – Corner mount



DGW87 – Sunshield



Specifications may be subject to changes without notice