

G65HD Series

Full-HD Megapixel Network Indoor PTZ Speed-dome Camera



ONVIF

IP
66

Full
HD

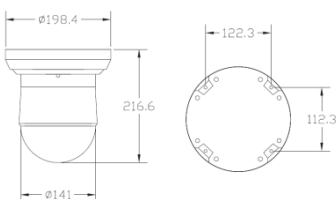
12x
Dig

Features

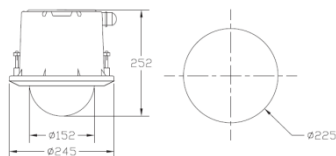
- 1/2.8 and 1/4 inch type Exmor® Sensor with approx. 3.27Mp for 1080p and 1.43Mp for 720p
- High Precision PTZ device with original Sony FCB series modules
- Low power consumption
- Temperature control and display on OSD
- Easy-Plug® Connector for simple installation. Automatic Wide Dynamic Range Function
- Embedded ceiling mount available

Dimensions (mm)

Standard



Embedded



Technical Specifications

MODEL	G65HD
CAMERA CHARACTERISTICS	
Optics	G65HD830: Sony FCB EH6500, 1/2.8 type, 30x Opt, f=4.6 mm (wide) to 138.0 mm (tele), F1.6 to F4.7, 1080p, 0.5 lx, image stabilisation G65HD820: Sony FCB EH6300, 1/2.8 type, 20x Opt, f=4.7 mm (wide) to 94.0 mm (tele), F1.6 to F3.5, 1080p, 0.5 lx G65HD728: Sony FCB EH3410, 1/4 type, 28x Opt, f=3.5 mm (wide) to 98.0 mm (tele), F1.35 to F3.7 720p, 0.25 lx, image stabilisation G65HD720: Sony FCB EH3310, 1/4 type, 28x Opt, f=3.5 mm (wide) to 70.0 mm (tele) F1.35 to F3.4720p, 0.25 lx * All models are equipped with 12x digital zoom
Resolution	1080p: Approx 3.27Mp, 1920 x 1080, 1280 x 720, 720 x 480, 720 x 576 720p: Approx. 1.43Mp, 1280 x 720, 720 x 480, 720 x 576
Features	Autp/Manual Focus, Auto/Manual WDR, Auto/Manual White Balance (ATW, Indoor, Outdoor, Auto Sodium Vapour Lamp (fix/auto), One Push, Manual), Video Enhancements (AGC, BLC, AE/ALC, WB, Eletr.-Flip, Mirror, DNR, Slow-Shutter, Colour Enhancement)
Privacy Masking	Max. upto 24 masks
Gain control	Auto/Manual (-3 dB to +28 dB, 16 steps), Max. Gain Limit (6 dB to 28 dB, 12 steps)
Others	S/N Ratio: >50dB, Shutter speed: 1/1 to 1/10000 sec
PTZ CHARACTERISTICS	
PTZ Range	Pan: 360°, 0.4° to 320° per sec / Tilt: 90°, 0.4° to 150° per sec
Preset position	128 positions
Sequence Tour	4 Preset tours
Scan Track	4 Scan tour
Pattern Track	4 Pattern Tour, 100 sec each
Idle protection	0 to 240 sec
Boot-up action	Preset, tours, tracks
IP CHARACTERISTICS	
Video Stream	H.264 Compression
Frame Rate	Max. 30fps @1080p and Max 60fps @ 720p
Bitrate	64Kbit/s to 10 Mbit/s
Network Interface	Static IP,DHCP, PPPoE, DDNS client
Protocol	TCP ,UDP ,IP ,HTTP ,DHCP, PPPoE, RTP, RTSP, ToS, DNS, DDnS, SNTP/NTP
Streaming	TCP, Multicast, RTP over UDP or/and Multicast
Access	Web Browser, NVR Software
Image Correction	Brightness, Saturation, Contrast
User Admin	Root level and up to 10 Users
Network Protocol	Video Interface Protocol, ONVIF
CONNECTION INTERFACE	
Network	RJ45 10/100Mbit/s T-Base
Audio & Alarm I/O	1x Input, 1x Output
Operating Temperature range	-10°C to 60°C , 80% Humidity
Dimension	S – Series: Ø198 (D) x 216 (H) mm, E (embedded) – Series: Ø245 (D) x 252 (H) mm
Power	12V DC / 24V AC , max. 30W with Blower

Accessories

DBS1 – Ceiling mount



DBS2 – Wall mount



Specifications may be subject to changes without notice

Vido Electronic Vertriebs GmbH
Favoritner Gewerbering 15
A-1100 Vienna, Austria

Tel: 43-1-958269820
Fax 43-1-958269827
E-Mail: sales@vido-europe.com
www.vido-europe.com

VIDO.AT[®]
AUSTRIA